

GPU TECHNOLOGY
CONFERENCE

EMERGING
COMPANIES SUMMIT

Changing the World Through GPU Compute



acceleware[®]
PROCESSING SUPERPOWER

Acceleware Ltd.

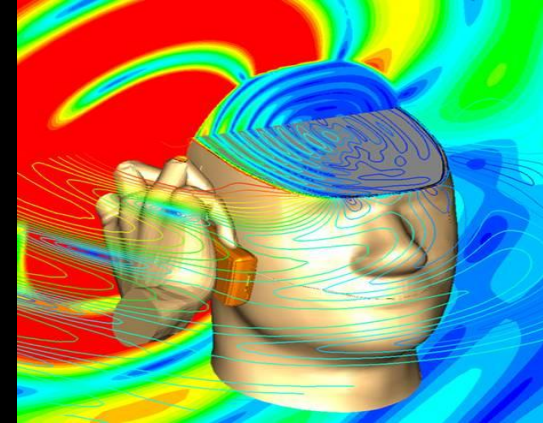
- 2004: Company founded
- 2005: 1st commercial GPU Compute software ships
- 2007: NVIDIA® invests \$3m in Acceleware
- 2008: CUDA™ consulting services begin
- 2009: CUDA training business launched

Products & Services

- GPU Accelerated Software Libraries
 - Electromagnetic Simulation for Computer-aided Engineering (CAE)
 - Seismic Imaging
- CUDA Consulting
- CUDA Training

Acceleware Products in CAE

- Finite Difference Time Domain algorithm accelerated on Tesla GPUs speeds electromagnetic simulation by 4 to 40 times



Mobile Antenna Devices
Antenna Design, Absorption
RF Circuits, EMI

Rad

Acceleware Electromagnetic Solvers

- Acceleware is the leading vendor for Accelerated FDTD
 - 9 of the top 10 cell phone manufacturers in the world use Acceleware





LG Electronics

South Korea

Acceleware's CUDA™ FDTD Solver helps create the next smart phone





FOXCONN

China

Acceleware's CUDA™ FDTD Solver enables Foxconn to deliver quicker speed to market



10X

Seismic Data Intensity is Growing

Producers require more seismic data for offshore and complex plays

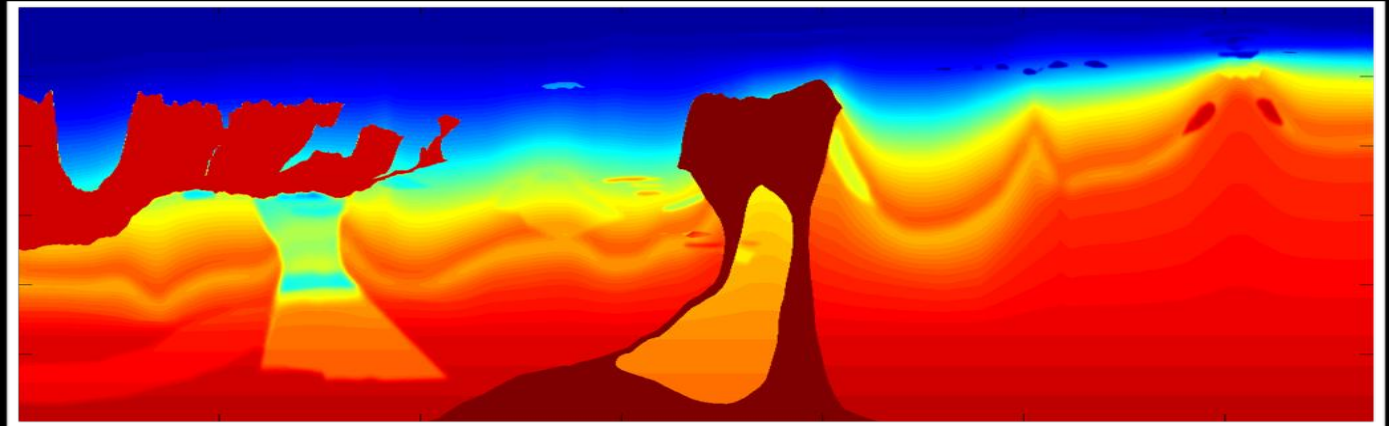


Wide and Full azimuth surveys acquire 10 times more data than traditional narrow azimuth surveys

3,000X

Applications for Complex Geology are Compute Intensive

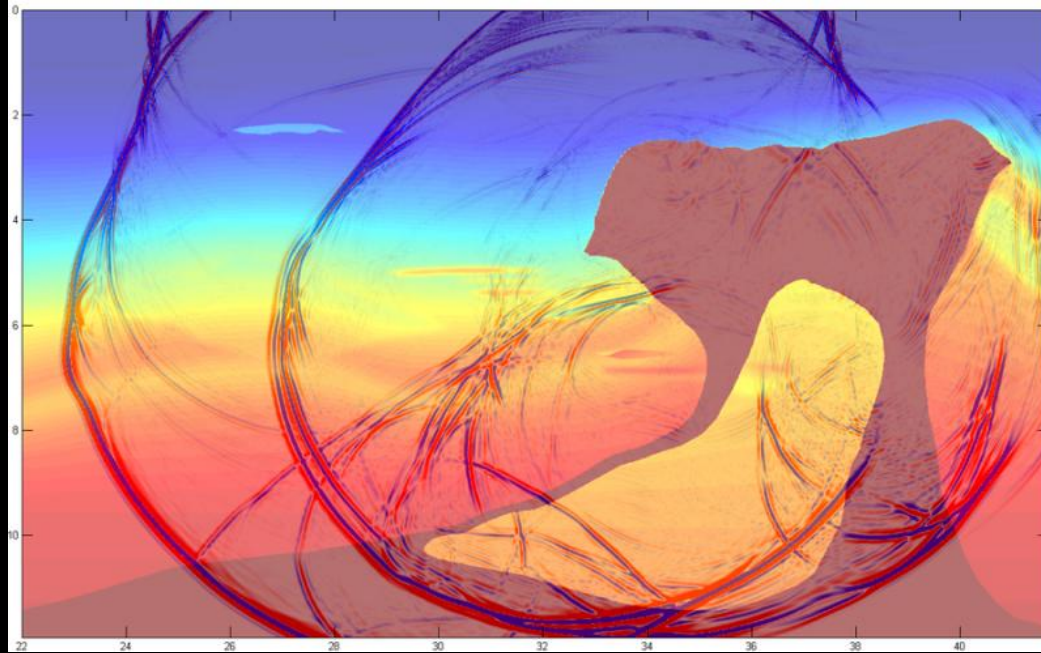
Complex geology requires advanced imaging techniques



State of the art reverse time migration requires 3,000 times more compute resources than conventional imaging

Acceleware Products in Oil & Gas

- Kirchhoff Time Migration
- Reverse Time Migration





The Netherlands

Acceleware's RTM library provides
state-of-the-art seismic imaging
accelerated on GPUs

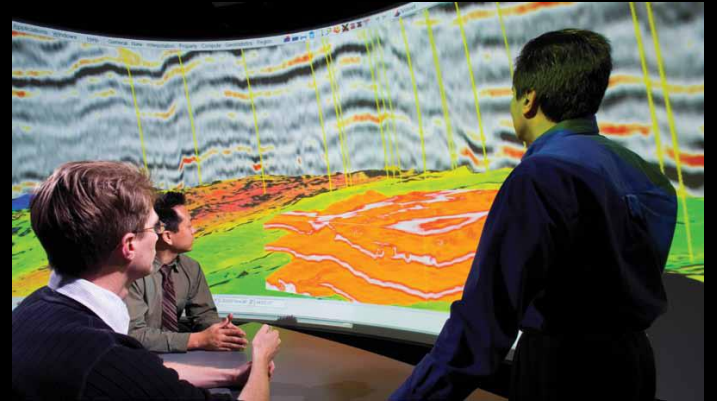




EXXON

USA

Acceleware optimizes existing code for accelerated processing using NVIDIA Tesla[®] GPUs





USA

Acceleware delivers industry
leading CUDA™ Training



Changing the World through GPU Compute

- Acceleware is listed on the Toronto Stock Exchange - symbol: AXE
- In 2012, Acceleware will be investing in further enhancements to its Oil & Gas products, potentially:
 - Full waveform inversion
 - Elastic RTM
- While the future is bright for CAE, CUDA consulting and CUDA training