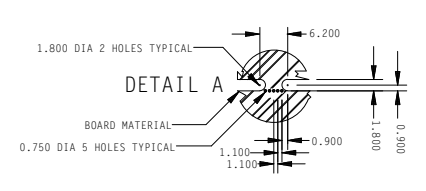
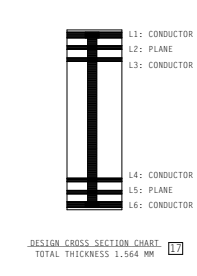
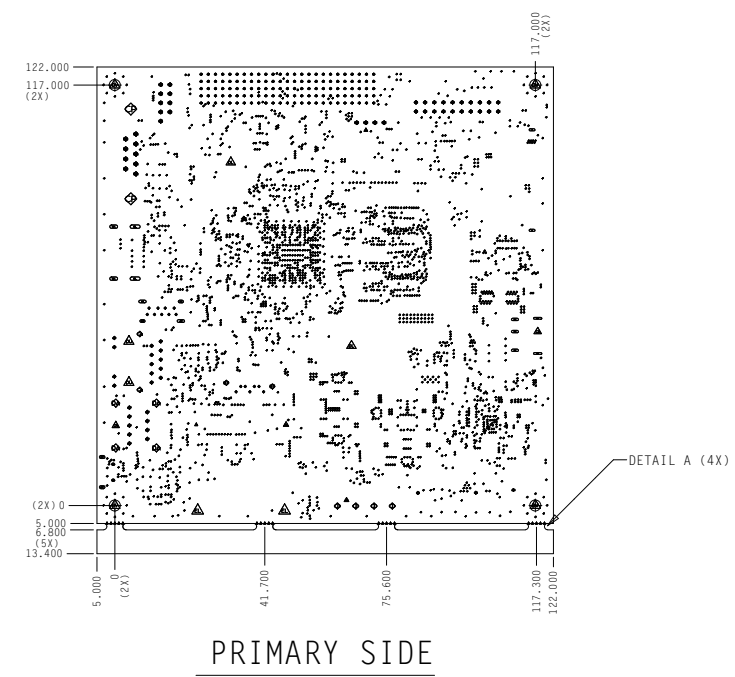


ALL NVIDIA DESIGN SPECIFICATIONS, REFERENCE BOARDS, FILES, DRAWINGS, DIAGNOSTICS, LISTS AND OTHER DOCUMENTS (TOGETHER AND SEPARATELY, "MATERIALS") ARE BEING PROVIDED "AS IS". NVIDIA MAKES NO WARRANTIES, EXPRESSED, IMPLIED, STATUTORY OR OTHERWISE WITH RESPECT TO THE MATERIALS, AND EXPRESSLY DISCLAIMS ALL IMPLIED WARRANTIES OF NON-INFRINGEMENT, MERCHANTABILITY AND FITNESS FOR A PARTICULAR PURPOSE.

REVISIONS						
REV	DESCRIPTION	CAD	DATE	CHK	APVD	DATE
000	ENGINEERING RELEASE	LPELIE	03/18/14	B. MONTAGUE	03/18/14	

D
C
B
A

D
C
B
A



DRILL CHART: TOP TO BOTTOM				
ALL UNITS ARE IN MILLIMETERS				
FIGURE	SIZE	TOLERANCE	PLATED	QTY
⊕	0.25	+0.08/-0.25	PLATED	2839
⊕	0.35	+0.08/-0.35	PLATED	33
⊕	0.65	+0.08/-0.08	PLATED	16
⊕	0.7	+0.08/-0.08	PLATED	125
⊕	0.89	+0.08/-0.08	PLATED	3
⊕	0.9	+0.08/-0.08	PLATED	14
⊕	1.0	+0.08/-0.08	PLATED	9
⊕	1.02	+0.08/-0.08	PLATED	20
⊕	1.15	+0.08/-0.08	PLATED	13
⊕	1.25	+0.08/-0.08	PLATED	9
⊕	1.45	+0.08/-0.08	PLATED	2
⊕	1.6	+0.08/-0.08	PLATED	2
⊕	1.73	+0.08/-0.08	PLATED	4
⊕	2.3	+0.08/-0.08	PLATED	4
⊕	3.3	+0.08/-0.08	PLATED	2
△	0.75	+0.05/-0.05	NON-PLATED	20
△	1.02	+0.05/-0.05	NON-PLATED	1
△	1.2	+0.05/-0.05	NON-PLATED	1
△	1.5	+0.05/-0.05	NON-PLATED	1
△	1.65	+0.05/-0.05	NON-PLATED	1
△	2.35	+0.05/-0.05	NON-PLATED	1
△	2.4	+0.05/-0.05	NON-PLATED	1
△	3.0	+0.08/-0.08	NON-PLATED	2
△	3.25	+0.08/-0.08	NON-PLATED	2
△	3.3	+0.08/-0.08	NON-PLATED	4
△	3.8	+0.08/-0.08	NON-PLATED	2
⊕	0.85x0.65	+0.13/-0.13	PLATED	2
⊕	1.5x0.8	+0.13/-0.13	PLATED	2
⊕	1.5x0.83	+0.13/-0.13	PLATED	2
⊕	1.6x0.6	+0.13/-0.13	PLATED	2
⊕	2.0x0.7	+0.13/-0.13	PLATED	3
⊕	2.1x0.8	+0.13/-0.13	PLATED	2
⊕	2.1x0.9	+0.13/-0.13	PLATED	2
⊕	2.3x0.5	+0.13/-0.13	PLATED	2
⊕	2.7x0.9	+0.13/-0.13	PLATED	2

NOTES UNLESS OTHERWISE SPECIFIED:

- MATERIAL: HALOGEN FREE GLASS-EPOXY RESIN SHEET. REFER TO BOARD STACKUP FOR WEIGHT OF CU, 2 SIDES, FLAME-RETARDANT. NEMA GRADE FR-4 OR EQUIVALENT. Tg IS DEPENDENT ON LAYER COUNT. 4-6 LAYERS USE Tg>135. 8-10 USE Tg>150 12+ USE Tg>170 PCBs SHALL COMPLY WITH UL94-V0. RAW MATERIAL AND FINISHED PCB MUST BE HF AND ROHS COMPLIANT
- FINISH COATING AND EDGE ELECTROPLATING IF APPLICABLE: REFER TO DOCUMENT 630-1070-001
- FINISH: HF SOLDERMASK OVER BARE COPPER USING LPI MASK. MASK THICKNESS: 0.010MM MIN, 0.03MM MAX THICKNESS COLOR: PLEASE REFER TO PCB COLOR/SILK/FINISH MATRIX DOCUMENT 630-1070-001
- CORNER RADI, INSIDE: 1.0MM MIN UNLESS OTHERWISE STATED. CORNER RADI, OUTSIDE: BREAK ALL SHARP EDGES AND CORNERS.
- SILKSCREEN LEGEND TO BOARD USING NON-CONDUCTIVE HF EPOXY PAINT. REMOVE SILKSCREEN FROM PADS. COLOR: PLEASE REFER TO PCB COLOR/SILK/FINISH MATRIX DOCUMENT 630-1070-001
- ACCEPTABILITY BASED ON NVIDIA'S SPEC 630-0010-001 AND IPC-A-600 CLASS 2. REFER TO NVIDIA'S SPEC FOR ORDER OF PRECEDENCE.
- NO GERBER MODIFICATIONS ALLOWED WITHOUT PRIOR WRITTEN APPROVAL FROM NVIDIA EXCEPT FOR IMPEDANCE TRACE WIDTHS MODIFICATIONS TO MEET REQUIREMENTS AND TEAR DROP ADDITIONS.
- TOLERANCES: ETCHING: +/- 20% OF MASTER PATTERN. WARPAGE: 0.10 / MM MAX ALONG LONGEST DIAG FRONT-TO-BACK REG: 0.13MM MAX. HOLE PLATING: 0.020MM MIN, 0.076MM MAX. HOLE DIAMETERS ARE FINISHED SIZES.
- TEST ALL BOARDS FOR OPENS AND SHORTS.
- DO NOT MODIFY TO BLOCK MASK FINE PITCH SMD PADS.
- SMT LAND PATTERNS THAT HAVE A PAD WIDTH <0.3MM MUST USE THE TOLERANCE +0.05MM - 0.015MM
- NO SOLDERMASK ALLOWED ON BGA PADS.
- DO NOT USE TOP-TO-BOTTOM PAD ALIGNMENT. VIA ALIGNMENT IS RECOMMENDED.
- PCB SUPPLIER TO PROVIDE FIRST ARTICLE REPORT PER 630-0025-001.
- REFERENCE DOCUMENT 617-7R375-1000-000 FOR SHORTS THAT WERE DESIGNED INTO THE ARTWORK.
- DUPLICATE DRILLS LOCATED WITHIN 0.03MM OF ONE ANOTHER MAY BE REMOVED BY THE SUPPLIER.
- REFERENCE DOCUMENT 607-7R375-1000-000 FOR IMPEDANCE AND STACKUP INFORMATION.
- TANGENCY ALLOWED. BREAKOUT ALLOWED ONLY IF TEARDROPS ARE ADDED FOR COMPENSATION.

THIS DRAWING CONTAINS INFORMATION WHICH IS THE PROPRIETARY PROPERTY OF NVIDIA CORPORATION. THIS DRAWING IS RECEIVED IN CONFIDENCE AND ITS CONTENTS MAY NOT BE DISCLOSED WITHOUT THE PRIOR WRITTEN CONSENT OF NVIDIA CORPORATION.

©1993-2014 NVIDIA CORPORATION DO NOT DUPLICATE

	QTY	PART NUMBER	DESCRIPTION	MATERIAL SPECIFICATION
	PARTS LIST			
UNLESS OTHERWISE SPECIFIED DIMENSIONS IN MM TOLERANCES ARE FRACTIONS DECIMALS ANGLES		CONTRACT NO.		NVIDIA Corporation
		APPROVALS		2701 SAN TOMAS EXPY, SANTA CLARA, CA 95050 USA
		DATE		PM375 DEV KIT
		SIGNATURE		FABRICATION DRAWING
MATERIAL		PROJECT ENGR	DATE	SIZE
FINISH		MIKE GOODEY	03/18/14	FSCH NO
DO NOT SCALE DRAWING		CHECKED	03/18/14	DWG NO
		BRYAN MONTAGUE	03/18/14	606-7R375-1000
				REV
				000
				SHT 1 OF 1

A

A

8

7

6

5

4

3

2

1